

Navigator Impressions Introduction

Navigator Impressions 1.0 for Windows is a remarkable graphing and customizing tool for financial charts. Navigator Impressions was designed from the ground up by CPAs, financial experts, and individual investors to illustrate your Financial Navigator data powerfully.

This document consists of 2 parts:

- Navigator Impressions introduction (this document)
- Using Navigator Impressions

Introduction

Charting Capabilities

Navigator Impressions provides a diverse set of chart types, from simple bar and line charts to three-dimensional rotated charts of your portfolio allocation or income and expense data. Whether you're a novice or an expert, Navigator Impressions charts can be built simply and easily from your Financial Navigator data. Choose from more than 55 pre-defined financial charts or use the Chart Wizard to take you step by step from your raw data to a finished chart. The Chart Wizard includes a gallery of Navigator Impressions chart types.

Formatting Tools

If the artist in you takes over, you can draw upon Navigator Impressions' endless formatting options to design the perfect chart. The powerful user interface makes chart design effortless. Navigator Impressions allows you to draw charts in true perspective and include axis, series, and data labels.

Features

Navigator Impressions provides you with:

- More than 55 pre-defined charts. Chart any of your Financial Navigator data, from the simplest to the most complex.
- The most complete set of 2D and 3D chart types imaginable.

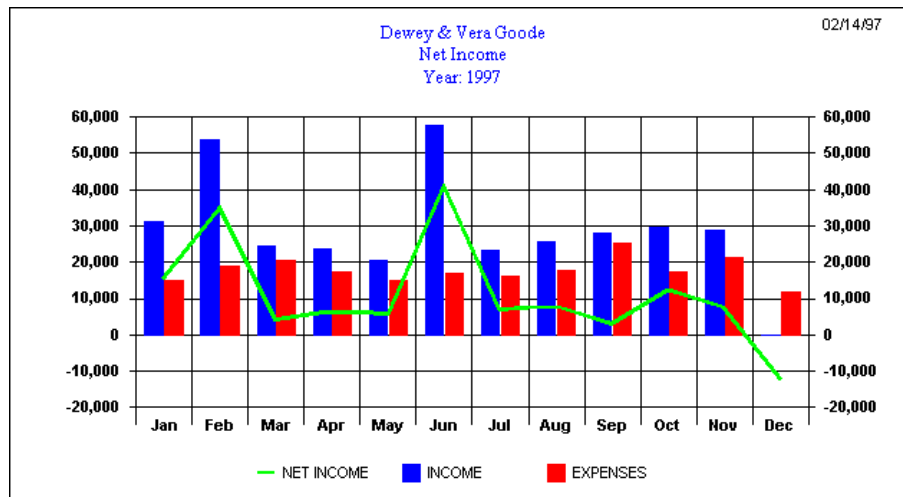
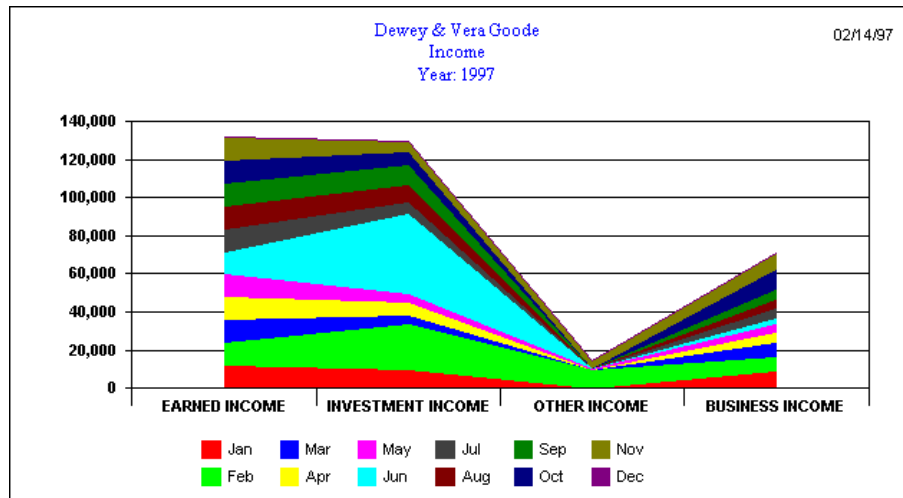
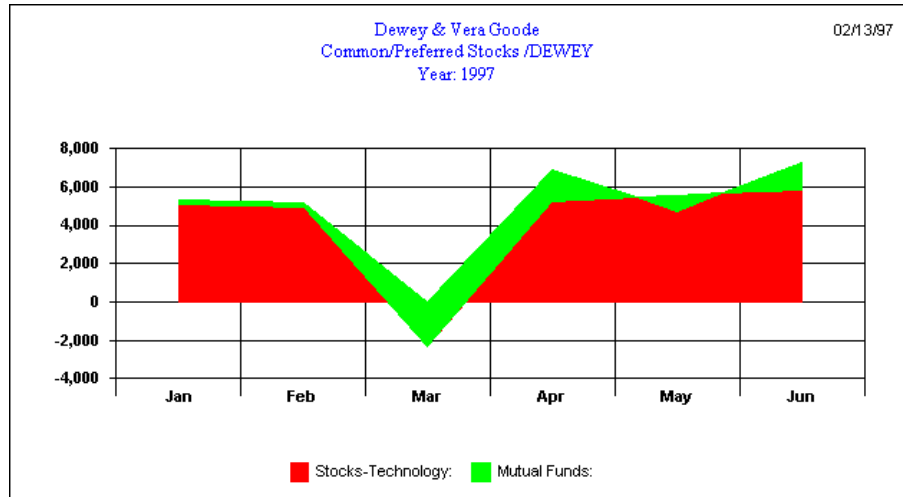
- A Chart Wizard with an easy-to-use gallery takes you step-by-step from raw data to a finished chart.
- A Data Grid that allows you to view and interactively change your chart data. Easily input and update data for any chart.
- Formatting tools and options to customize your charts.
- Full online Help documentation.
- Exporting capabilities. Save your charts in .bmp or .wmf format or copy charts to other Windows application.

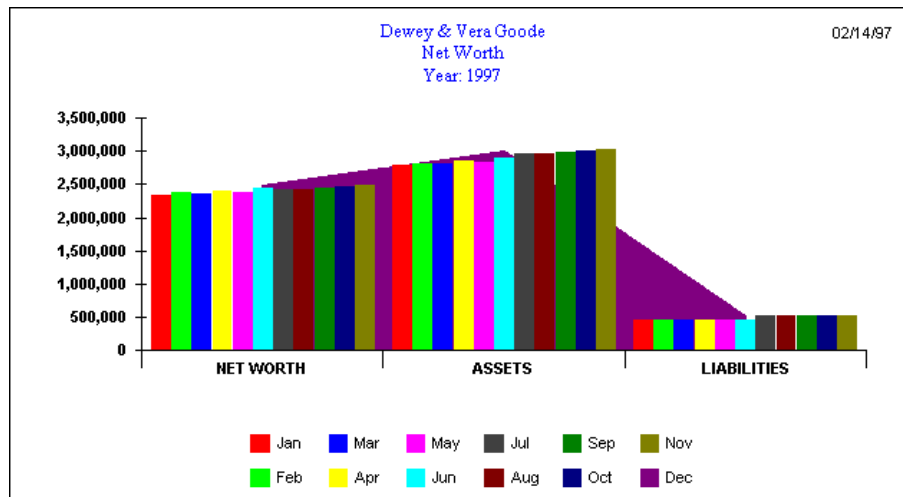
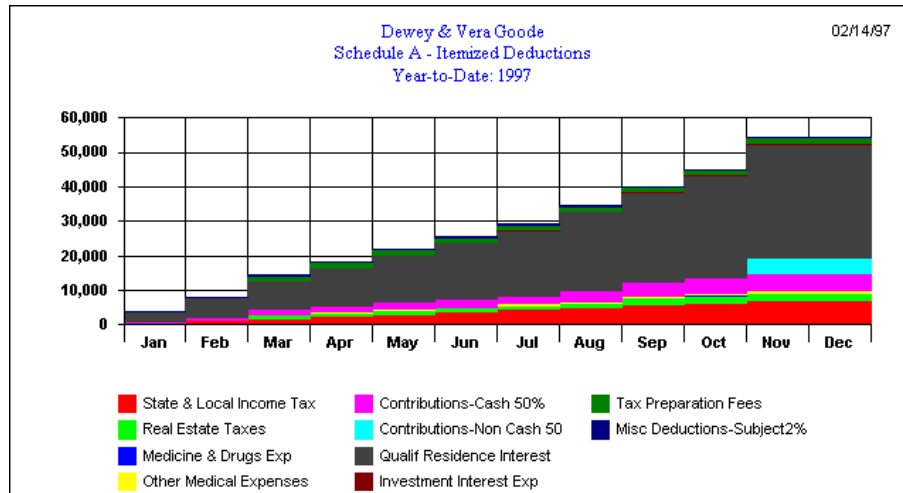
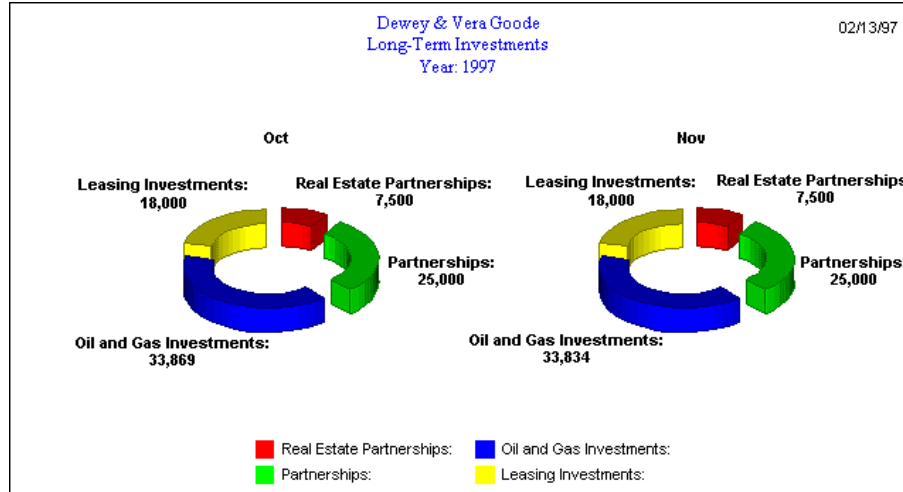
Creating stunning charts has never been so easy. Most of the work in Navigator Impressions is done from the following screens:

- **New Chart Selection** — Choose from income and expense, net worth, investment, and tax-oriented charts. Chart data by Class, Group, Category, Account, Format Type, or Tax Code.
- **Chart Wizard** — The Chart Wizard provides an easy, step-by-step approach for creating and modifying charts. The Chart Wizard contains a convenient gallery of chart types, styles, and shortcuts for designing and customizing your chart.
- **Data Grid Editor** — Enter and update your Financial Navigator data in Navigator Impressions graphical data grid. The data grid allows you to enter and update your data and change column and row headings. You also can exclude or hide data and alter the number of dimensions in your row and column labels. Any changes made or applied to your data are automatically applied to the chart.

Section Overview

This section on Navigator Impressions shows the novice as well as experienced users the why and how of chart construction. The ability to present data in a manner other than a straight spreadsheet or summary statement adds visual power to the explanation of your company's financial conditions, balance sheet, or income statement. Navigator Impression confers on the chart maker the ability to put forward in a simple and understandable way, projections of revenues, cash flow, profits and many other indicators that aid in planning strategy under differing scenarios. All of this is accomplished without altering the permanent entries in the accounting section of Financial Navigator. Here are a few representations of data to consider.



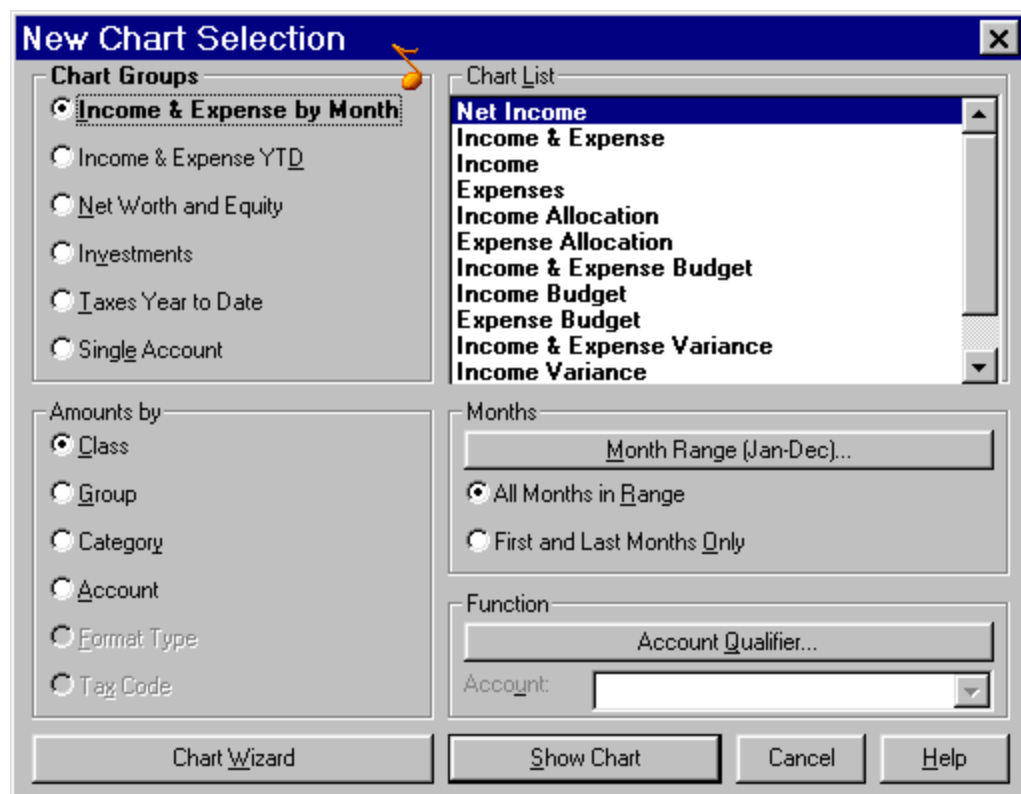


Navigator Impressions Quick Tour

To help acclimate the new user to Navigator Impressions, walk through a few variations of chart construction and highlight significant features to enhance your creativity. Once familiar with the workings and capabilities of Navigator Impressions, creating different types and styles of charts are limited only by your imagination.

It is important to begin this section recognizing that the final chart display depends to a very large extent on the data that resides in the main accounting section of Financial Navigator. If figures vary little from one period to the next, the chart reflects little variance. Conversely, a large increase or decrease recorded in Financial Navigator makes your chart display more dramatic (For example, a spike up in net income or revenues is particularly pleasing to the eye).

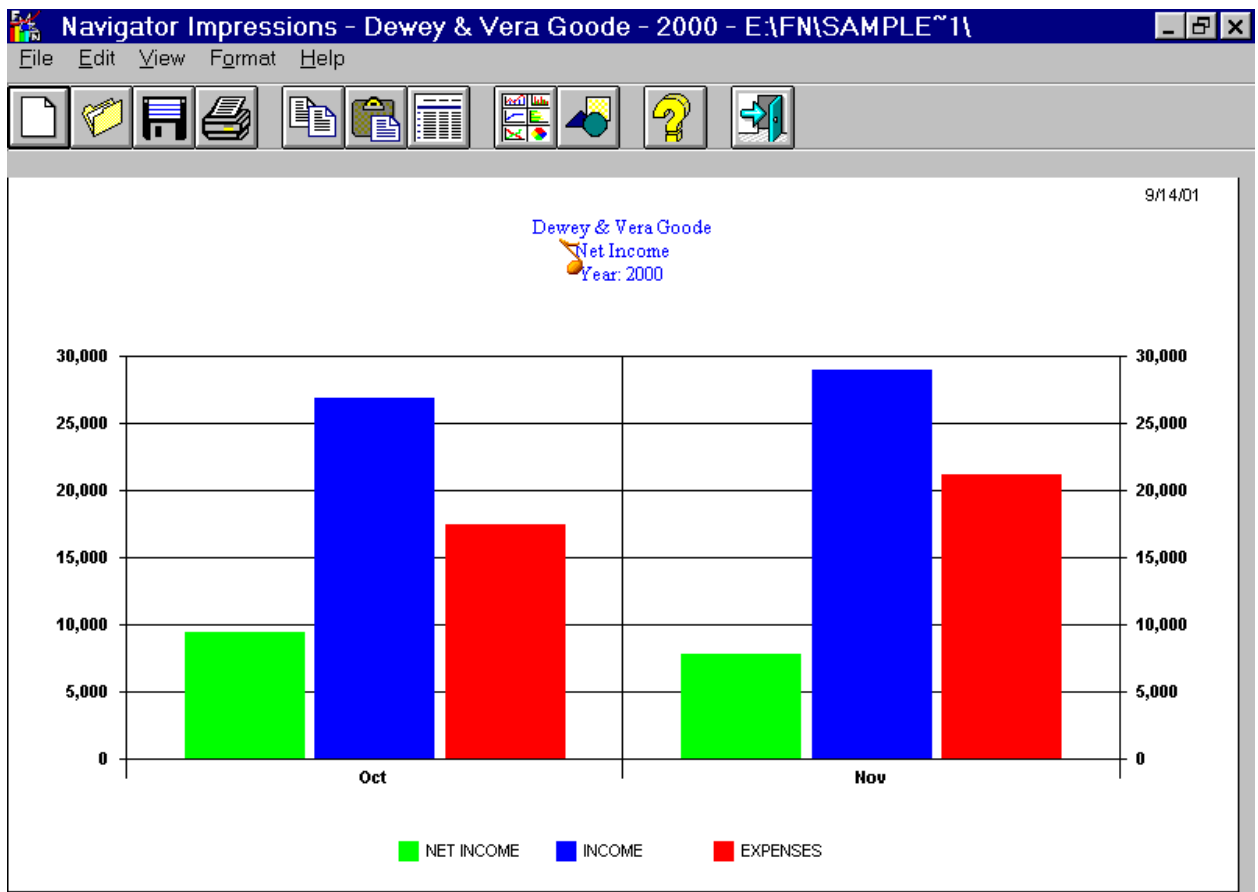
To begin the Navigator Impressions tour, select the **Navigator Impressions** icon on the FN toolbar. Or select **Reports | Navigator Impressions Charts**. The New Chart Selection screen appears.



This screen gives a list of charts that appear automatically as pre-set defaults for chart groups, amounts, lists, months, and functions. The following are the default settings when you first open Impressions:

- Chart Groups — **Income & Expense by Month**; the broadest characterization of data from FN entries.
- Chart List — **Net Income**; filters FN Chart Group data to fit parameters of your choice.
- Amounts by — **Class**; further refines data to desired level of detail.
- Months — **Jan-Dec** (In the next example the Oct-Nov range was used)
All Months in Range; choose specific period for data display.
- Function — (clear)

The toolbar above the New Chart Selection screen is disabled until you display a chart. To display a sample chart, select the **Show Chart** command button. The screen appears as follows:



Tool Bar

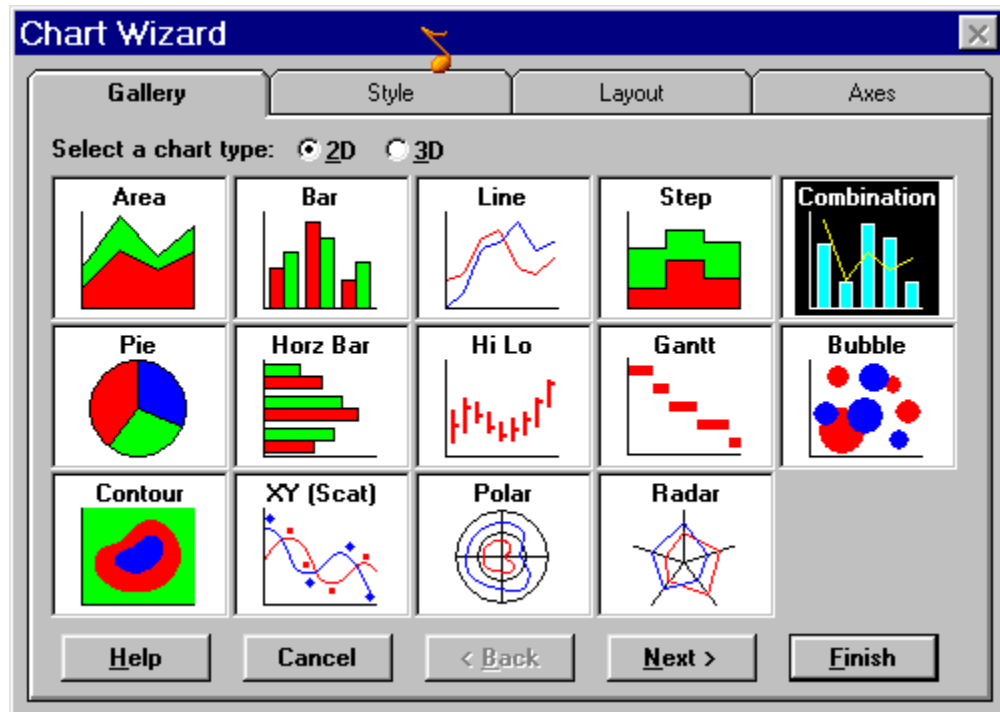
Once the chart displays, the tool bar directly above the chart is automatically activated. The toolbar contains the following icons (from left to right):

- **New Chart** — Displays the New Chart Selection screen.
- **Open Chart** — Opens a previously created and saved chart.

- **Save Chart** — Saves the current chart. In the Save As dialog box, you can select the name and location of the chart. You also have the option of saving your chart as a .vtc (native Impressions format), .wmf (Windows MetaFile), or .bmp (Windows bitmap) file.
- **Print Chart** — Prints the current chart.

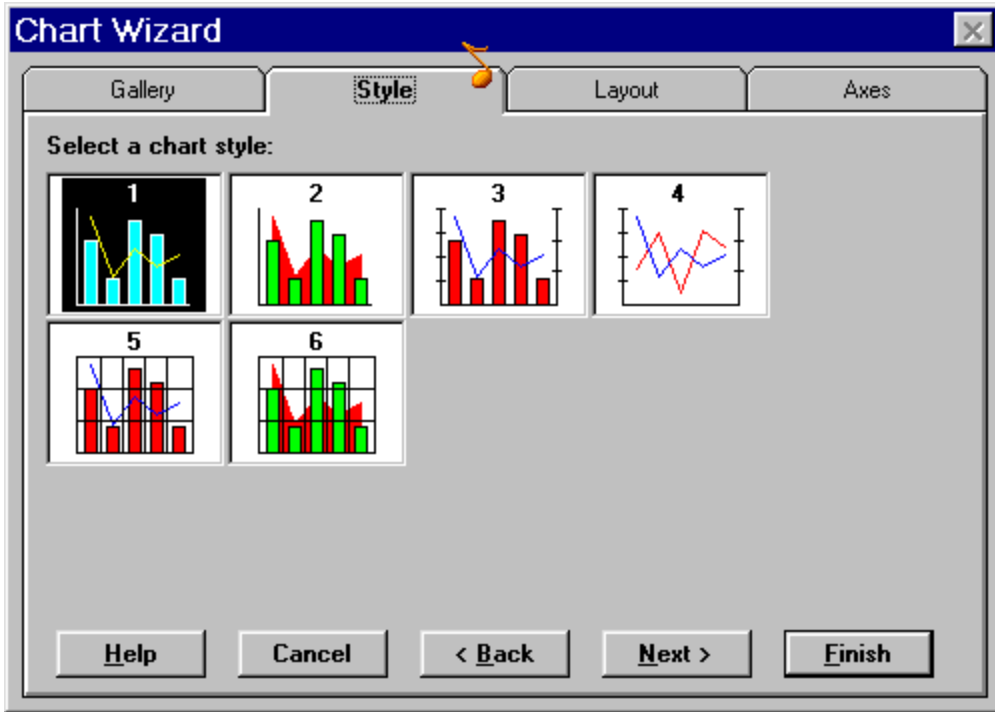
***Note:** Make sure Navigator Impressions and the printer you want to use are configured properly. Otherwise the Print button will not work.*

- **Copy Chart** — Copies the current chart to the Clipboard. You can then go to another document, such as a text document or spreadsheet, and insert the chart.
- **Paste Chart** — Pastes the contents of the Clipboard to the selected location on the current chart.
- **Edit Chart Data** — Displays the Data Grid Editor.
- **Chart Wizard** — Displays the Chart Wizard.

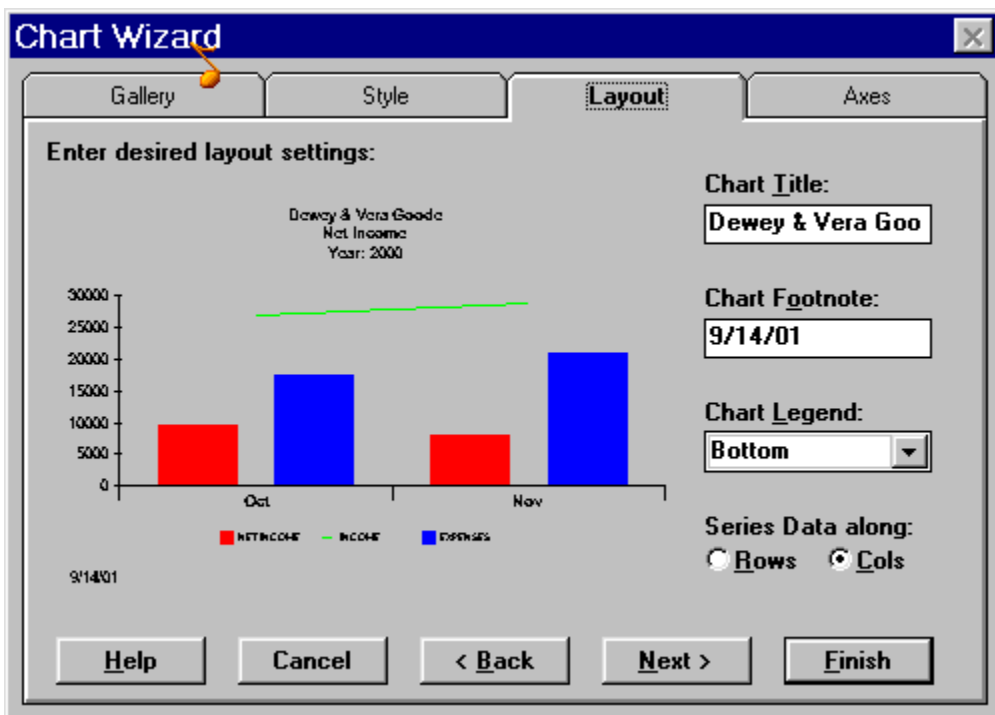


With the Chart Wizard, the number of ways you can display your data increases exponentially. You now have the option of presenting your information in 2 or 3 dimensions. From the Gallery tab (shown above) you may choose to show your data as simple line graphs or as complex combinations of contours or polar representations.

Select **Next** to move to the Style tab.



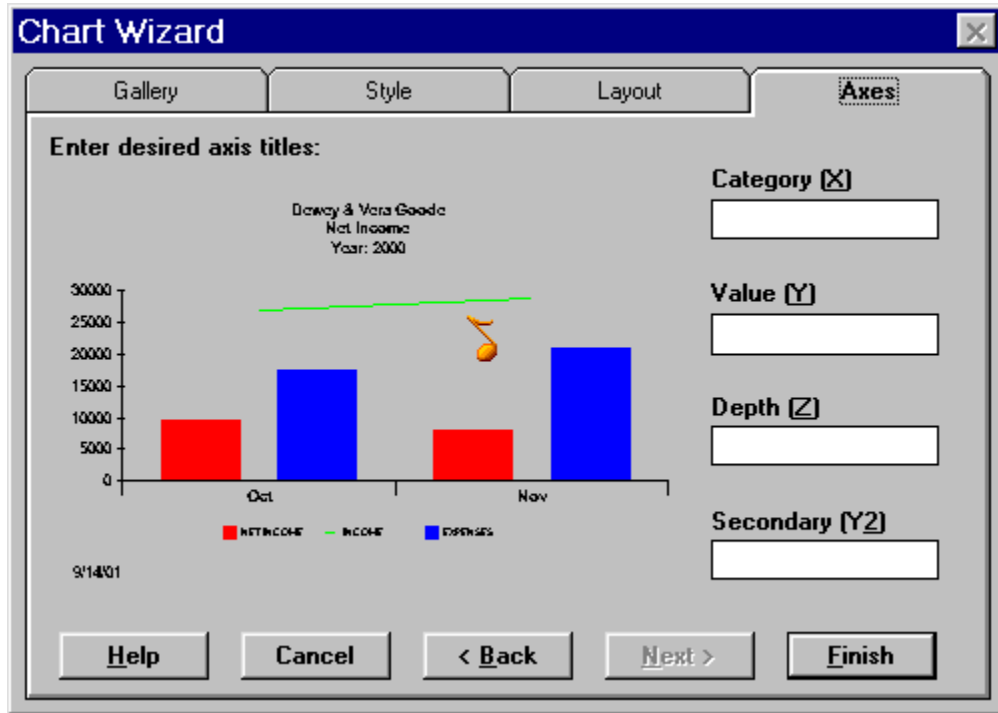
The Style tab offers subtle or prominent background and foreground to enhance your charts. Select **Next** to move to the Layout tab.



The Layout tab displays a preview of the chart you have selected and offers the following options:

- **Chart Title** — Insert a title or leave blank.
- **Chart Footnote** — Insert a footnote or leave blank.
- **Chart Legend** — Select a location or None.
- **Series Data** — Organize your data by rows or columns.

Select **Next** to move to the Axes tab.



The **Axes** screen allows you to label the axes of your charts and graphs. The Depth (Z) and Secondary (Y2) axes are available for most three-dimensional charts.

How to Reach Us

Information and Sales: 800 468-FNFN (3636)
Fax: 650 962-0730
Web site: www.finnav.com
E-mail: customerservice@finnav.com
Technical Support: 650 962-8510
Hours: Monday - Friday 7:30 a.m. - 4:30 p.m. PT
Business Address: 254 Polaris Ave
 Mountain View, CA 94043
Telephone: 650 962-0300

Trademark Acknowledgments

Financial Navigator, Navigator, Advanced Reports, CheckForm Navigator, Navigator Access, Navigator DataBridge, Navigator Impressions, and Navigator StockWeb are trademarks or registered trademarks of Financial Navigator Int'l.

Windows is a registered trademark of Microsoft Corporation. Other product names mentioned in this reference material may be trademarks or registered trademarks of their respective companies and are hereby acknowledged.